





These are the recommended types of feeders.



The bees like it better if you add honey to the patty recipe. If you add honey you will need to freeze them until needed or they could mold. Another way is to put a little honey on the patty before you put the patty in the hive. Put the side with the honey towards the bees. Check every 2 to 3 weeks when it's warm, add patties as needed.

Pollen Supplement Patties

There are many recipes. These are a couple that I would recommend:

#1 Ingredients:

1 part - water @ 160 degrees 1 part - pollen, 2 parts - sugar 3 parts - soy flour

Wax paper, One gallon Zip lock freezer bags

Heat water to 160 degrees, add pollen and stir until dissolved, remove from heat, add sugar, stir until dissolved, add soy flour until the material is doughy and not sticky. Then cut wax paper into squares approx 4"X 4". Place a ball of mixture the size of a tennis ball on a wax paper square flatten into patty continue until you have made 5 to 8 patties. Place in a zip lock bag and freeze until needed.

#2 Ingredients:

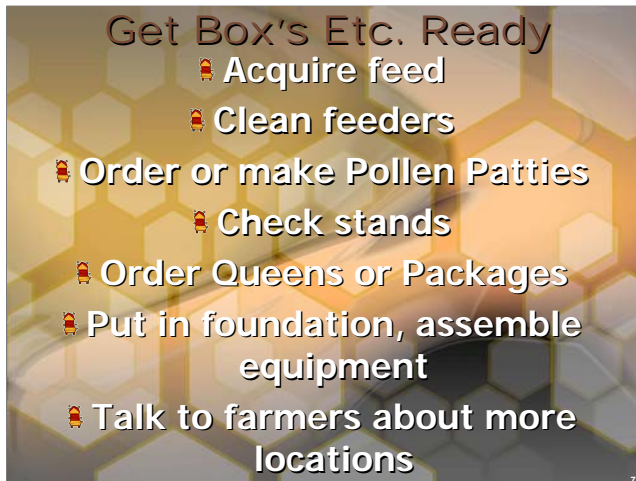
½ parts - water, 1 part pasteurized honey, 1 part sugar, the rest is the same as above.

If you don't have any pollen you can add more soy flour. Be sure it's NOT soy meal. To pasteurize honey, heat to 160 degrees for at least 10 minutes.

What You Need to do Now
(If your NOT moving bees to Canola or wanting to split)

- 🐝 Check your hives
on a nice day
- 🐝 Bees on top (light)
- 🐝 Feed if needed (thick)
- 🐝 Are you ready for spring

The bees move up to eat their honey through the winter. If they are all the way to the top of the hive they most likely are close to being out of stored honey. If so, feed thick syrup and patties to sustain them through the rest of the winter. Get everything ready now for spring.



These are some things you can be doing.

